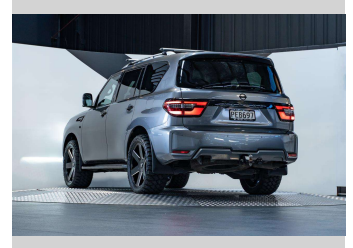
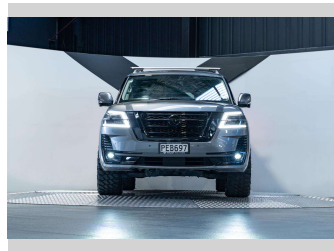


2022 Nissan Patrol TI-L 5.6L V8 4WD



Purchase Price

\$89,990

Includes GST, Registration & Licensing

Finance may be available on this vehicle. Ask one of our friendly staff for more information.



Gain peace of mind with Mechanical Breakdown Insurance. **Ask us how.**



Top features

None Listed

Body Style

5 door, SUV / 4x4

Odometer

55,900 km

Engine

5552 cc, Internal Combustion

Fuel Type

Petrol

Transmission

Automatic, 4WD

Wheels

-

VIN

JN1TANY62A0165791

Interior

Black, Leather

Safety



Based on 2023 VSRR rating

Reg No.

PEB697

Ext Colour

Grey

History

NZ New

Seats

8 seats, Leather

CO2 Emissions

☆☆☆☆☆☆

373 grams/km

Energy Economy

☆☆☆☆☆☆

Annual fuel cost of \$6,350

16.2L per 100km

Cost per year is an estimate based on petrol price of \$2.80 per litre and an average distance of 14000 km. Emissions and Energy Economy figures standardised to 3P WLTP.

Stock ID: 4427



Trust Motors Ltd | Phone 09 887 8668 | Email george@trustmotors.co.nz
10 Norman Spencer Drive, Papatoetoe, Auckland 2104, New Zealand
www.trustmotors.co.nz



★★★★★
4.90 | 1026 reviews