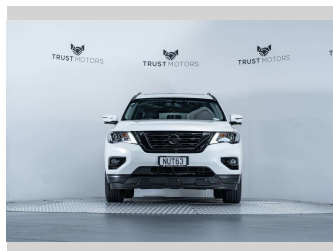
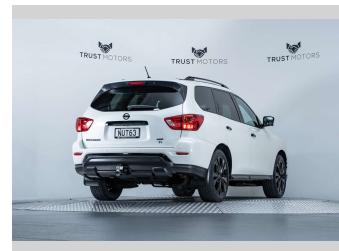
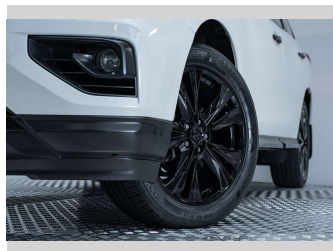
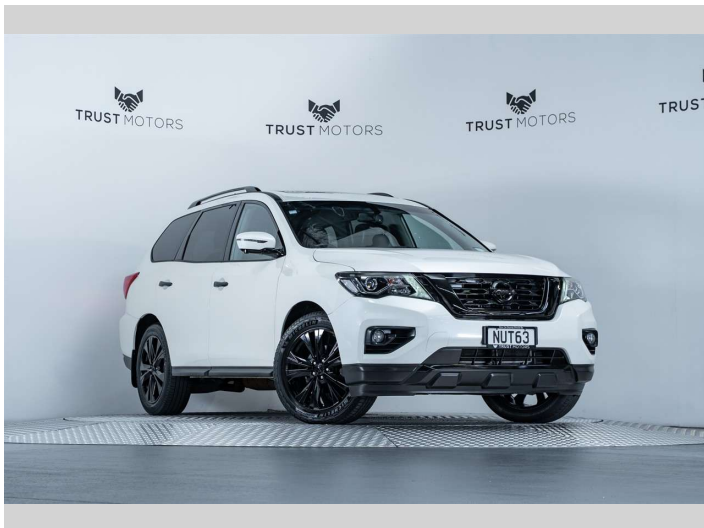


2017 Nissan Pathfinder TI 3.5L V6 4WD



Purchase Price

Includes GST, Registration & Licensing

\$29,990

Finance may be available on this vehicle. Ask one of our friendly staff for more information.

finance
NOW

Gain peace of mind with Mechanical Breakdown Insurance. **Ask us how.**


ASSURANT®

Top features

None Listed

Body Style

5 door, SUV / 4x4

Odometer

91,800 km

Engine

3498 cc, Internal Combustion

Fuel Type

Petrol

Transmission

Auto, 4WD

Wheels

-

VIN

5N1DR2MM2HC646016

Interior

Black

Safety



Based on 2025 UCSR rating for 13-20 models

Reg No.

NUT63

Ext Colour

Ivory Pearl

History

NZ New, 6 owners

Seats

7 seats, Leather

CO2 Emissions

★ ★ ☆ ☆ ☆ ☆

261 grams/km

Energy Economy

★ ☆ ☆ ☆ ☆ ☆

Annual fuel cost of \$4,430

11.3L per 100km

Cost per year is an estimate based on petrol price of \$2.80 per litre and an average distance of 14000 km. Emissions and Energy Economy figures standardised to 3P WLTP.

Stock ID: 8599



Trust Motors Ltd | Phone 09 887 8668 | Email george@trustmotors.co.nz
10 Norman Spencer Drive, Papatoetoe, Auckland 2104, New Zealand
www.trustmotors.co.nz



★★★★★
4.92 | 2076 reviews