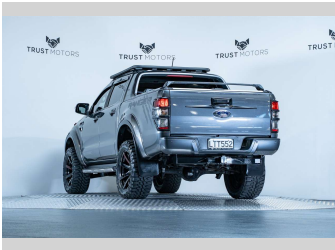
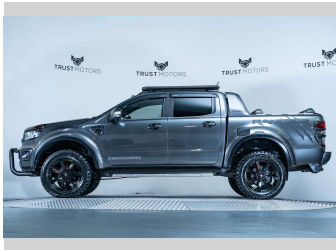
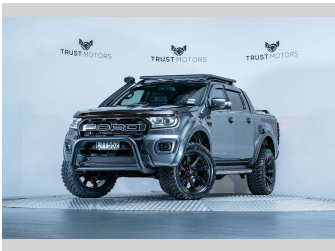
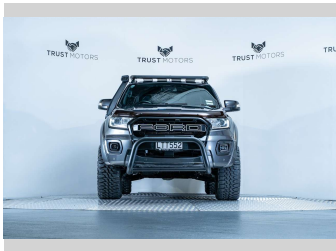
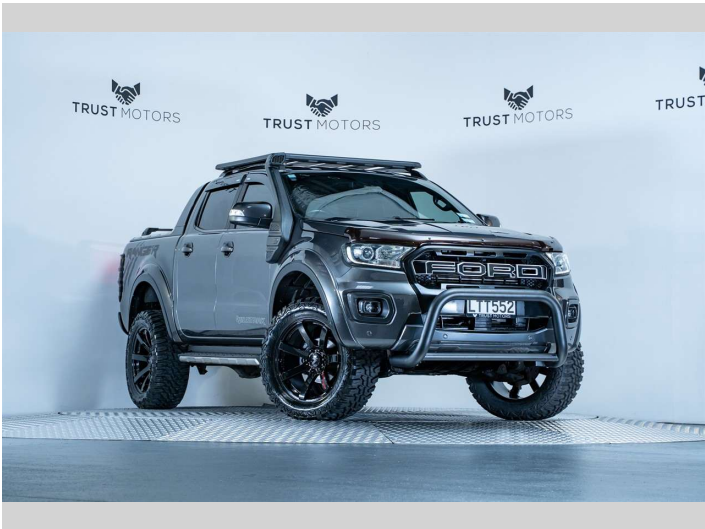


# 2018 Ford Ranger Wildtrak 2.0L Bi-Turbo 4WD



Purchase Price

\$45,990


Includes GST, Registration & Licensing

Finance may be available on this vehicle. Ask one of our friendly staff for more information.

finance

NOW

Gain peace of mind with Mechanical Breakdown Insurance. **Ask us how.**



ASSURANT®

Top features

None Listed

Body Style

4 door, Ute

Odometer

130,200 km

Engine

1996 cc, Internal Combustion

Fuel Type

Diesel

Transmission

Automatic, 4WD

Wheels

-


VIN

MPBUMFF60JX189711

Interior

Black

Safety



Based on 2024 VSRR rating

Reg No.

LTT552

Ext Colour

Meteor Grey

History

NZ New, 6 owners

Seats

5 seats, Leather

CO2 Emissions

★★★☆☆

225 grams/km

Energy Economy

★★☆☆☆

Annual fuel cost of \$3,440


8.5L per 100km

Cost per year is an estimate based on diesel price of \$2.00 per litre and an average distance of 14000 km. Includes Road User Charges (RUC). Emissions and Energy Economy figures standardised to 3P WLTP.

Stock ID: 7837



Trust Motors Ltd | Phone 09 887 8668 | Email [george@trustmotors.co.nz](mailto:george@trustmotors.co.nz)  
10 Norman Spencer Drive, Papatoetoe, Auckland 2104, New Zealand  
[www.trustmotors.co.nz](http://www.trustmotors.co.nz)



★★★★★

4.92 | 1784 reviews