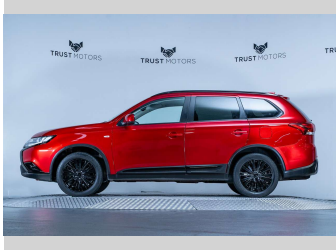
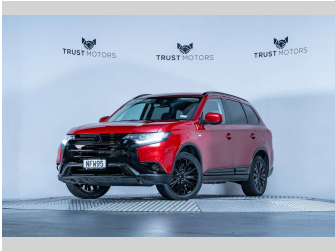
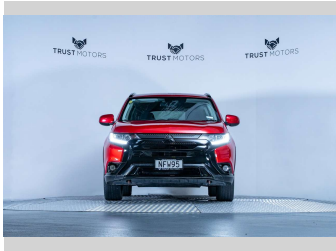


2021 Mitsubishi Outlander LS 2.4L 4WD



Purchase Price

\$21,990

Includes GST, Registration & Licensing

Finance may be available on this vehicle. Ask one of our friendly staff for more information.



Gain peace of mind with Mechanical Breakdown Insurance. **Ask us how.**



Top features

None Listed

Body Style

5 door, SUV / 4x4

Odometer

114,600 km

Engine

2360 cc, Internal Combustion

Fuel Type

Petrol

Transmission

Automatic, 4WD

Wheels

-

VIN

JMFXTGF8WLZ016810

Interior

Black

Safety

-

Reg No.

NFW95

Ext Colour

Red Diamond

History

NZ New, 2 owners

Seats

7 seats, Fabric

CO2 Emissions

-

Energy Economy

-

Stock ID: 7363



Trust Motors Ltd | Phone 09 887 8668 | Email george@trustmotors.co.nz
10 Norman Spencer Drive, Papatoetoe, Auckland 2104, New Zealand
www.trustmotors.co.nz

