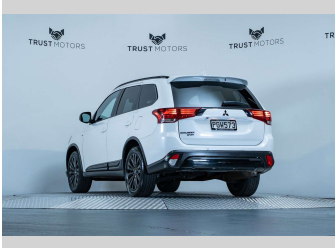
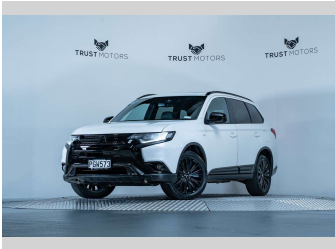
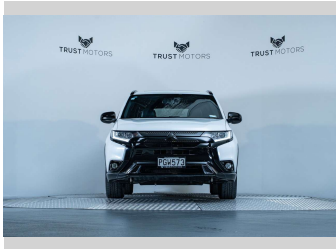
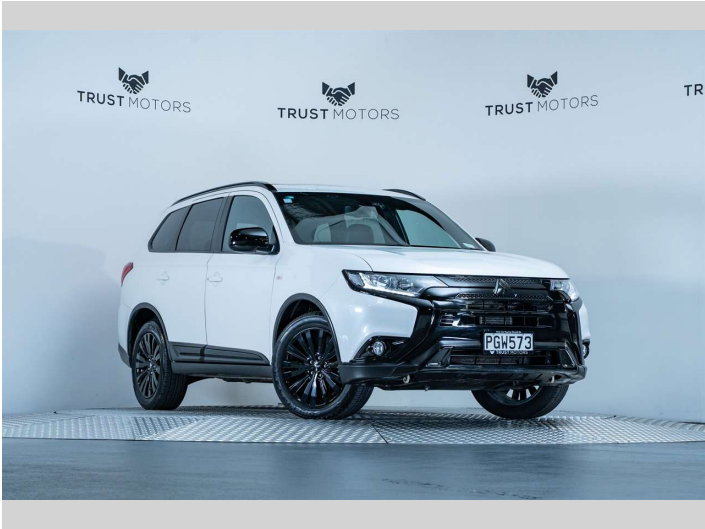


# 2022 Mitsubishi Outlander SP 2.4L 4WD



### Purchase Price

Includes GST, Registration & Licensing

**\$24,990**

Finance may be available on this vehicle. Ask one of our friendly staff for more information.



Gain peace of mind with Mechanical Breakdown Insurance. **Ask us how.**



### Top features

None Listed

### Body Style

**5 door, SUV / 4x4**

### Odometer

**112,900 km**

### Engine

**2360 cc, Internal Combustion**

### Fuel Type

**Petrol**

### Transmission

**Auto, 4WD**

### Wheels

-

### VIN

**JMFXTGF8WLZ032530**

### Interior

**Black**

### Safety



Based on 2024 UCSR rating for 12-21 models

### Reg No.

**PGW573**

### Ext Colour

**Cardrona White**

### History

**NZ New, 1 owner**

### Seats

**7 seats, Leather**

### CO2 Emissions

★★★★☆

**186 grams/km**

### Energy Economy

★★☆☆☆☆

**Annual fuel cost of \$3,140  
8L per 100km**

Cost per year is an estimate based on petrol price of \$2.80 per litre and an average distance of 14000 km. Emissions and Energy Economy figures standardised to 3P WLTP.

**Stock ID: 7651**



Trust Motors Ltd | Phone 09 887 8668 | Email [george@trustmotors.co.nz](mailto:george@trustmotors.co.nz)  
10 Norman Spencer Drive, Papatoetoe, Auckland 2104, New Zealand  
[www.trustmotors.co.nz](http://www.trustmotors.co.nz)

