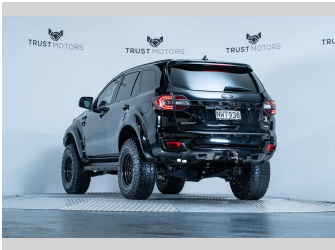
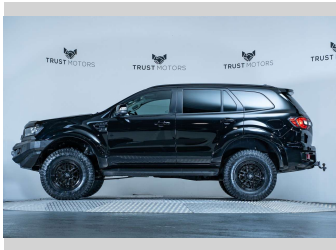
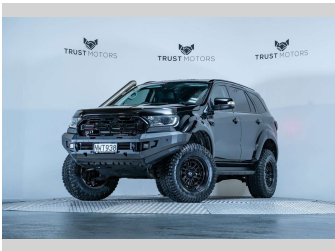
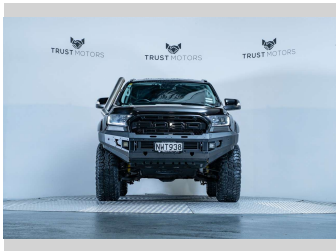
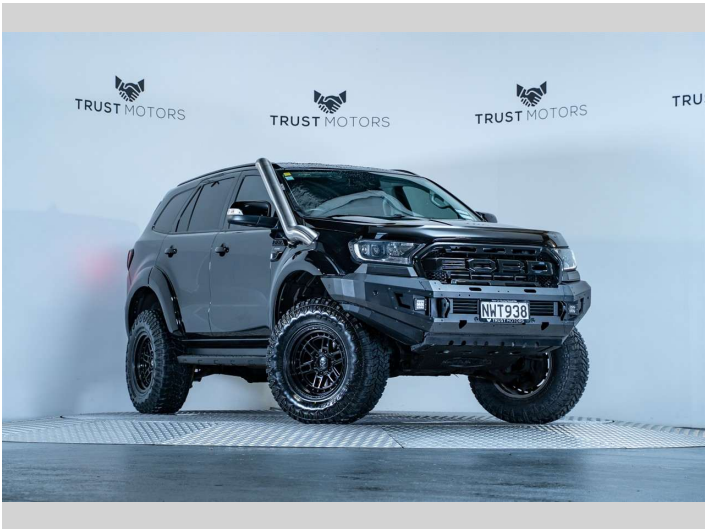


2021 Ford Everest Sport 2.0L Bi-Turbo 4WD



Purchase Price

\$51,990

Includes GST, Registration & Licensing

Finance may be available on this vehicle. Ask one of our friendly staff for more information.

finance

NOW

Gain peace of mind with Mechanical Breakdown Insurance. Ask us how.

ASSURANT®

Top features

None Listed

Body Style

4 door, SUV / 4x4

Odometer

97,800 km

Engine

1996 cc, Internal Combustion

Fuel Type

Diesel

Transmission

Automatic, 4WD

Wheels

-

VIN

MNAAXXMAWAMG49338

Interior

Black

Safety

5 star safety rating

Based on 2024 VSRR rating

Reg No.

NWT938

Ext Colour

Shadow Black

History

NZ New, 2 owners

Seats

7 seats, Leather

CO2 Emissions

★★★★☆☆

209 grams/km

Energy Economy

★★☆☆☆☆

Annual fuel cost of \$3,330

8.1L per 100km

Cost per year is an estimate based on diesel price of \$2.00 per litre and an average distance of 14000 km. Includes Road User Charges (RUC). Emissions and Energy Economy figures standardised to 3P WLTP.

Stock ID: 7540



Trust Motors Ltd | Phone 09 887 8668 | Email george@trustmotors.co.nz
10 Norman Spencer Drive, Papatoetoe, Auckland 2104, New Zealand
www.trustmotors.co.nz

★★★★★

4.92 | 1727 reviews