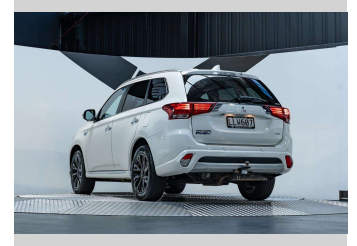
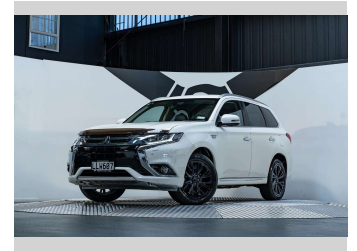
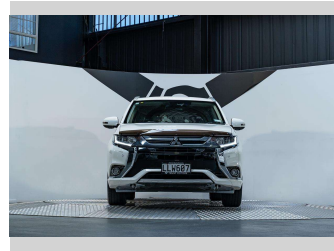



# 2018 Mitsubishi Outlander VRX 88KW PHEV 4WD



**Purchase Price** **\$29,990**  
Includes GST, Registration & Licensing

Finance may be available on this vehicle. Ask one of our friendly staff for more information.



Gain peace of mind with Mechanical Breakdown Insurance. **Ask us how.**



an ASSURANT company

**Top features**

None Listed

Body Style  
**5 door, SUV / 4x4**

Odometer  
**75,200 km**

Engine  
**1998 cc, Plug-In Hybrid**

Fuel Type  
**Hybrid**

Transmission  
**Automatic, 4WD**

Wheels  
-

VIN  
**JMFXDGG2WJZ000616**

Interior  
**Black**

Safety



Based on 2023 UCSR rating for 12-21 models

Reg No.  
**LLW607**

Ext Colour  
**Diamond White**

History  
**NZ New, 4 owners**

Seats  
**5 seats, Leather**

CO2 Emissions  
**★★★★☆**  
**42 grams/km**

Energy Economy  
**★★★★☆**

**Annual fuel cost not available**  
**1.9L per 100km**

Actual figures and cost per year will vary based on proportion of hybrid mode driving and battery charging schedule. Emissions and Energy Economy figures standardised to 3P WLTP.

**Stock ID: 4299**



Trust Motors Ltd | Phone 09 887 8668 | Email [george@trustmotors.co.nz](mailto:george@trustmotors.co.nz)  
10 Norman Spencer Drive, Papatoetoe, Auckland 2104, New Zealand  
[www.trustmotors.co.nz](http://www.trustmotors.co.nz)

