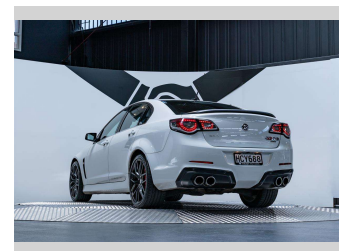
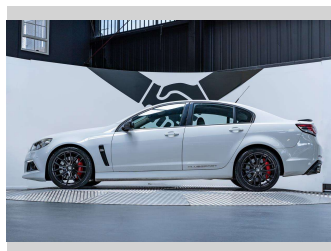
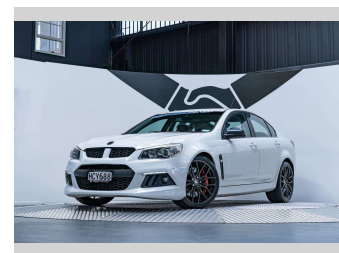
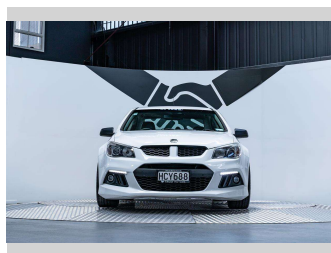
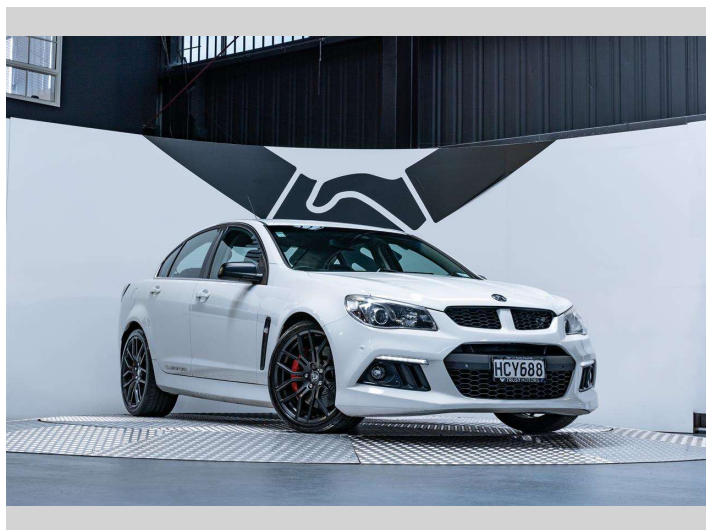



# 2013 Holden HSV R8 Clubsport 6.2L LS3 Manual



**Purchase Price** **\$69,990**  
Includes GST, Registration & Licensing

Finance may be available on this vehicle. Ask one of our friendly staff for more information.



Gain peace of mind with Mechanical Breakdown Insurance. **Ask us how.**



**Top features**

None Listed

Body Style  
**4 door, Sedan**

Odometer  
**131,700 km**

Engine  
**6162 cc, Internal Combustion**

Fuel Type  
**Petrol**

Transmission  
**Manual, Rear Wheel**

Wheels  
-

VIN  
**6G1FK5EW3EL922424**

Interior  
**Black**

Safety



Based on 2023 UCSR rating for 06-13 models

Reg No.  
**HCV688**

Ext Colour  
**Heron White**

History  
**NZ New, 1 owner**

Seats  
**5 seats, Leather/ Suede**

CO2 Emissions  
☆☆☆☆☆☆  
**335 grams/km**

Energy Economy  
☆☆☆☆☆☆


**Annual fuel cost of \$5,530**  
**14.1L per 100km**

Cost per year is an estimate based on petrol price of \$2.80 per litre and an average distance of 14000 km. Emissions and Energy Economy figures standardised to 3P WLTP.

**Stock ID: 3689**



Trust Motors Ltd | Phone 09 887 8668 | Email [george@trustmotors.co.nz](mailto:george@trustmotors.co.nz)  
10 Norman Spencer Drive, Papatoetoe, Auckland 2104, New Zealand  
[www.trustmotors.co.nz](http://www.trustmotors.co.nz)



4.89 | 989 reviews