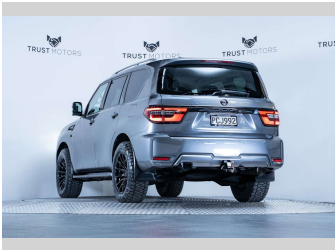
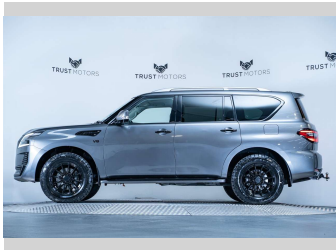
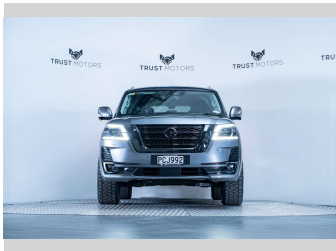


2022 Nissan Patrol TI-L 5.6L V8 4WD



Purchase Price

\$82,990

Includes GST, Registration & Licensing

Finance may be available on this vehicle. Ask one of our friendly staff for more information.

finance

NOW

Gain peace of mind with Mechanical Breakdown Insurance. **Ask us how.**

ASSURANT®

Top features

None Listed

Body Style

5 door, SUV / 4x4

Odometer

93,300 km

Engine

5552 cc, Internal Combustion

Fuel Type

Petrol

Transmission

Automatic, 4WD

Wheels

-

VIN

JN1TANY62A0165026

Interior

Black

Safety

5 star safety rating

Based on 2024 VSRR rating

Reg No.

PCJ992

Ext Colour

Gun Metal Metallic

History

NZ New, 4 owners

Seats

8 seats, Leather

CO2 Emissions

☆☆☆☆☆☆

373 grams/km

Energy Economy

☆☆☆☆☆☆

Annual fuel cost of \$6,350

16.2L per 100km

Cost per year is an estimate based on petrol price of \$2.80 per litre and an average distance of 14000 km. Emissions and Energy Economy figures standardised to 3P WLTP.

Stock ID: 7391



Trust Motors Ltd | Phone 09 887 8668 | Email george@trustmotors.co.nz
10 Norman Spencer Drive, Papatoetoe, Auckland 2104, New Zealand
www.trustmotors.co.nz

★★★★★

4.92 | 1698 reviews