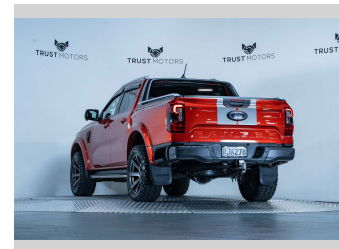
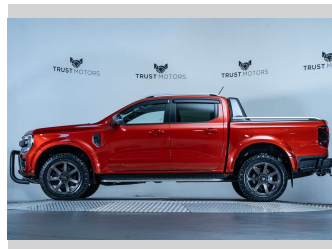
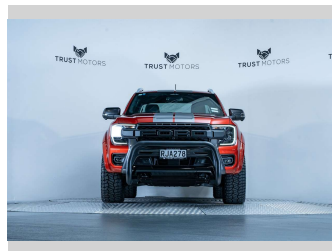


# 2022 Ford Ranger Wildtrak 2.0L Bi-Turbo 4WD



## Purchase Price

Includes GST, Registration & Licensing

**\$57,990**

Finance may be available on this vehicle. Ask one of our friendly staff for more information.

finance  
**NOW**

Gain peace of mind with Mechanical Breakdown Insurance. **Ask us how.**

  
**ASSURANT®**

## Top features

None Listed

## Body Style

**4 door, Ute**

## Odometer

**33,500 km**

## Engine

**1996 cc, Internal Combustion**

## Fuel Type

-

## Transmission

**Automatic, 4WD**

## Wheels

-

## VIN

**MPBCMFF60NX416636**

## Interior

**Black**

## Safety



Based on 2022 ANCAP rating for 22+ models

## Reg No.

**RJA278**

## Ext Colour

**Sedona Orange**

## History

**NZ New, 1 owner**

## Seats

**5 seats, Leather**

## CO2 Emissions

★★★★☆☆

**218 grams/km**

## Energy Economy

★★★★☆☆

**Annual fuel cost of \$3,390  
8.3L per 100km**

Cost per year is an estimate based on diesel price of \$2.00 per litre and an average distance of 14000 km. Includes Road User Charges (RUC). Emissions and Energy Economy figures standardised to 3P WLTP.

**Stock ID: 7717**



Trust Motors Ltd | Phone 09 887 8668 | Email [george@trustmotors.co.nz](mailto:george@trustmotors.co.nz)  
10 Norman Spencer Drive, Papatoetoe, Auckland 2104, New Zealand  
[www.trustmotors.co.nz](http://www.trustmotors.co.nz)

